



Extension for Community Healthcare Outcomes

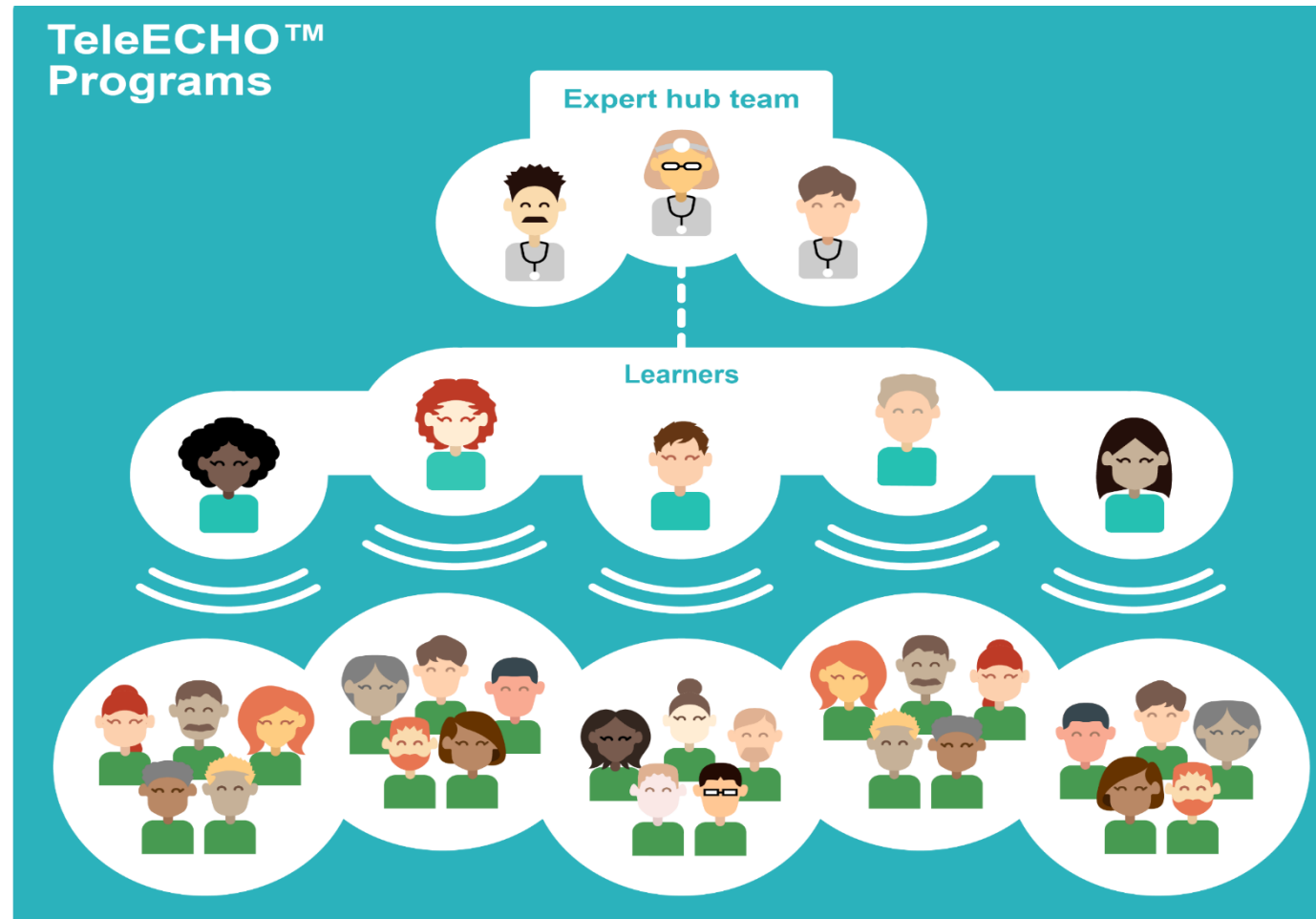
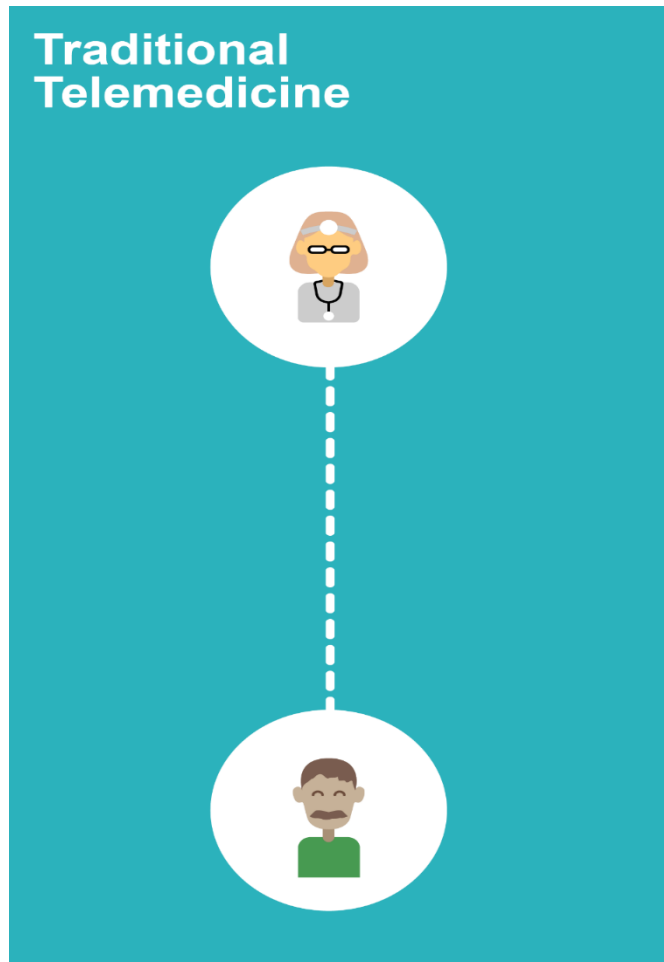
All Teach, All Learn

When all the principles are applied, a learning community in which "All Teach and All Learn" comes together. This includes:

- Interactive Components
- Guided Practice
- Ongoing Mentorship
- Peer-to-Peer Learning
- Collaborative Problem Solving



Telemedicine vs. ECHO



Missouri Alliance for Dual Diagnosis

How it works

- Presenting providers receive specific **case guidance** to better support children with dual diagnoses
- All participate in a convenient, **web-based**, small-group format
- Learn and share **best practices** for supporting children with dual diagnoses/behavioral health diagnoses and for trauma-responsive care



How it helps

- Children and families have improved treatment outcomes and quality of life experience closer to home
- Missouri mental health providers get greater access to cross-system resources and support to provide comprehensive care for people with dual diagnoses
- Improve communication and collaboration between state agencies and the service systems for children with dual diagnosis in order to identify gaps in care and develop long term solutions

Come Learn with Us

1st & 3rd Wednesdays from 12:30 - 2:00 pm CT

Date	Topic	Presenter
09/15/21	Positive Behavior Supports	Terri Rodgers, PhD, BCBA, LBA
10/06/21	Modifying Common Therapeutic Approaches	Rachel Jones, LPC
10/20/21	Evaluating & Measuring Intervention Effectiveness	Lucas Evans, BCBA, LBA
11/03/21	Building Supports for Success - Developing a Team	Landre Kingdon, MSW, LCSW
11/17/21	Facilitating a Team Meeting	Kathleen Deppeler
12/01/21	Transitions: Planned Goes Better	Rhi Evans, BCBA, LBA
12/15/21	Functional Communication Training	Terri Rodgers, PhD, BCBA, LBA
01/05/22	Family Perspective	Lisa Nothaus, BS
01/19/22	Coordinated Treatment/Service Planning	Amber Stockreef, M.Ed., BCBA, LBA
02/02/22	Provider Wellness & Secondary Traumatic Stress Exposure	Rachel Jones, LPC

<https://echoautism.org/missouri-alliance-for-dual-diagnosis/>

Register now

Vision:

Imagine communities where people with all abilities live their best lives.

Mission:

Democratize expertise and disseminate best practices to mentor and guide communities of clinicians, educators, and advocates, **creating local expertise and increasing access for autistic people and their families.**



Provides **mentorship** for a range of specialists



Builds capacity to support individuals with autism of all ages

Grows local expertise, to ensure best-practice autism care

Children with autism and their families get **whole care for the whole family**, close to home

Our Year-to-Date In Numbers

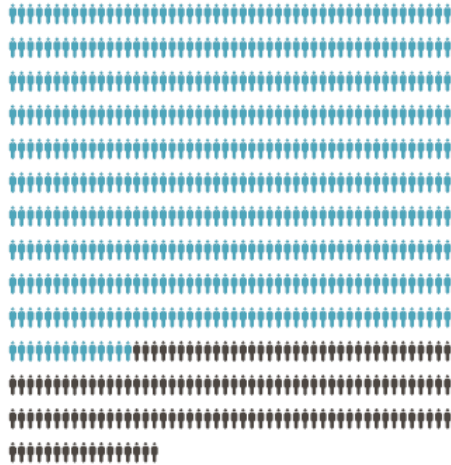
JULY 1, 2020 TO JUNE 30, 2021

NUMBER OF INDIVIDUALS

PARTICIPATING IN ECHO PROGRAMS:

667

UNIQUE PARTICIPANTS



514
UNIQUE PARTICIPANTS
FROM MISSOURI

153
UNIQUE PARTICIPANTS
BEYOND MISSOURI

NUMBER OF COMMUNITIES

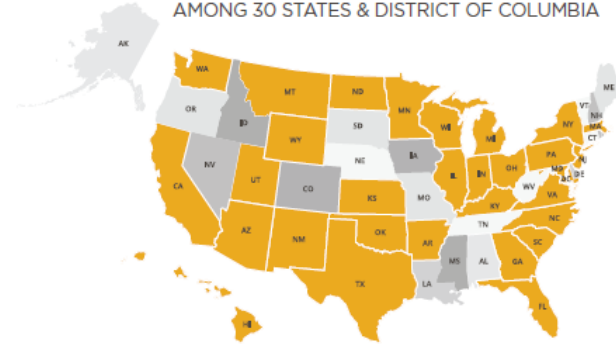
REACHED THROUGH ECHO PROGRAMS:

172 MO COMMUNITIES



88 US COMMUNITIES

AMONG 30 STATES & DISTRICT OF COLUMBIA



10 COUNTRIES



Join Show-Me ECHO



- www.echoautism.org
- <https://echoautism.org/missouri-alliance-for-dual-diagnosis/>
- <https://echoautism.org/join-an-echo/>
- www.show-meecho.org –
- <https://showmeecho.org/clinics/developmental-disabilities/>
- <https://showmeecho.org/clinics/autism-behavior-solutions/>
- <https://showmeecho.org/clinics/autism/>