

..... *The 4 Phases of* .....

# ON-BOARDING

.....  
*with the MIIS*

## PHASE 1

### PREPARATION



#### Complete the Data Exchange Profile

Provide technical information about your EHR.

#### HL7 Message Validation

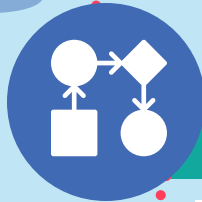
Use the validation tool on the ContactMIIS Resource Center to validate messages.

#### Await On-Boarding Invite

The MIIS team will invite you to on-board and a kick-off call will be scheduled.

## PHASE 2

### ON-BOARDING



#### Clinical Readiness

Create a workflow for informing and data sharing.

Stock materials at your clinics.

Train staff about the MIIS and your new workflows.

#### Technical Readiness

Review of messages in the MIIS certification environment.

## PHASE 3

### DATA REVIEW



#### Connect to MIIS Production

Technical connection of your EHR to the MIIS production environment.

#### Data Review

Clinical staff perform a data review to ensure data in the EHR matches data displayed in the MIIS.

## PHASE 4

### GO-LIVE



#### Implement Workflow

Begin informing patients and managing data sharing.

#### Conduct Quarterly Reviews

Clinical staff should review data each quarter.

#### User Management

Ensure users are maintained so only appropriate staff have access to the MIIS.